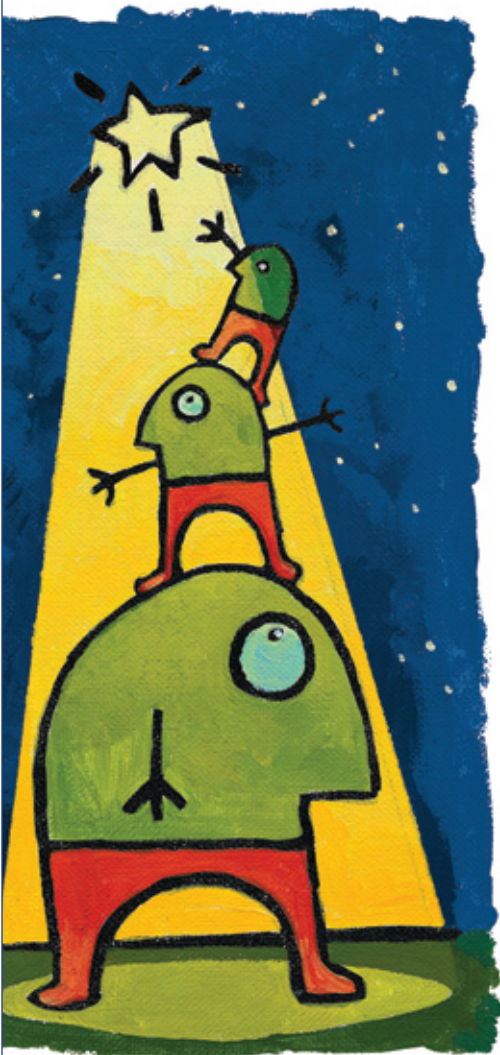


Build Your Management Team & Retain Top Performers



The Emerging Leader Institute (ELITE™) is a hands-on development program that enables employers to offer targeted management skills training to their key, high-potential managers. The monthly seminars use the shared experiences of program participants to supplement facilitator-led instruction and proven curriculum. Open dialogue in these sessions creates a wealth of experiences and provides applications far greater than the single source of a traditional classroom event.

Participants will develop a network of peers that extends beyond the structured workshops – making this a high value and return for any organization's management training and retention dollars.

PROGRAM DETAILS

Individual learning occurs in peer groups that meet monthly to participate in presentations on critical leadership topics, augmented with peer discussion and group problem-solving based on real business challenges. The program also offers optional private one-on-one coaching meetings with the facilitator to extend the learning experience.

THE DATES FOR THE 2008-2009 FALL/WINTER SESSION ARE:

September 10, October 15, November 12, December 10, January 14, February 11
Each session runs from 8:30am-12noon

Topics include:

- Leveraging Interpersonal Effectiveness
- Leading Through Change
- Effective Communication for Managers
- Coaching for Improved Performance
- Managing Conflict
- Building Effective Teams

Fall/Winter 2008 sessions will be held at 607 14th Street, N.W., Suite 400, Washington, DC. 20005

Tuition: \$2,995 for enrollment in the 6 half-day workshops
\$795 for 5 one-on-one coaching sessions, optional additional cost

*ELITE is approved for
2.1 CEU's by George
Mason University*

WHO SHOULD ATTEND

High potential managers who:

- Want to enhance their management skills
- Enjoy collaborating with others for mutual learning and support
- Learn rapidly from others' experience
- Hold themselves accountable for developing their management skills